

NOTE - ELECT. H. & A. C. UNDER SEPARAT  
BY OWNER

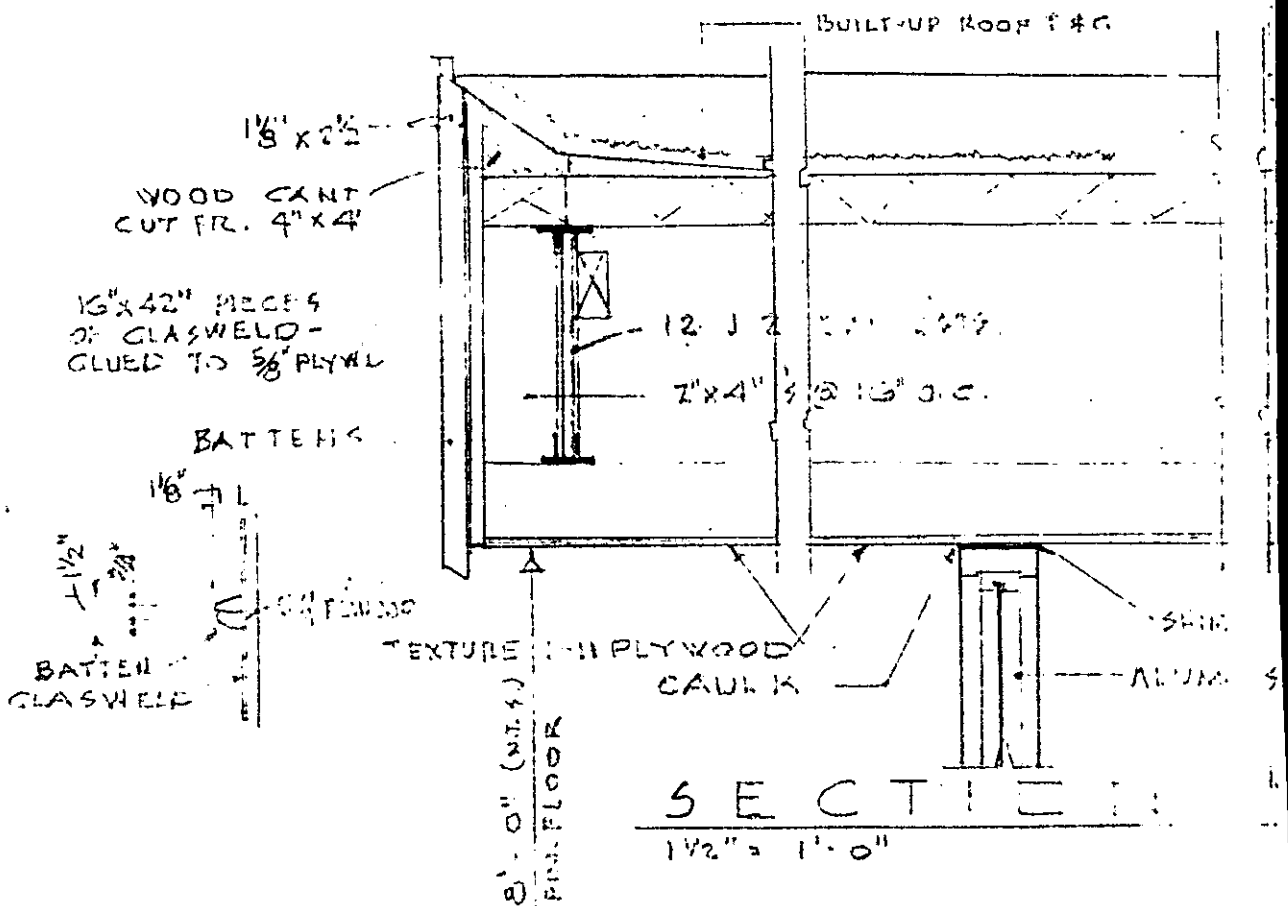
(CONTINUED ON NEXT PAGE)

N. PLEASANTBURG DRIVE VOL 920 PAGE 181

# P L O T P L A N

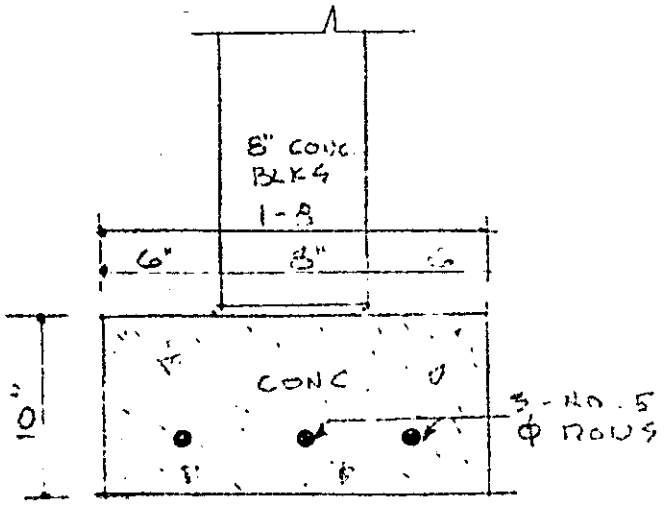
1" = 20'  
TOTAL PARKING - 18 SPACES

CURB  
18" GAS MAIN



## S E C T I O N

1 1/2" = 1'-0"



FTG FOR 8" WALL 1 1/2" = 1'-0"

(CONTINUED ON NEXT PAGE)